

Product datasheet

YY1 CHICKEN POLYCLONAL ANTIBODY

SKU: MM-0205-P

30 µg

OVERVIEW

Clonality:

Polyclonal

Host:

Chicken

Reactivity:

Human, Pig, Sheep, Mouse, Rat

Application:

WB, IF

Target:

YY1

Target background:

YY1 is a ubiquitous and multifunctional zinc-finger transcription factor involved in the activation or repression of a large number of genes that are critical for basic biological processes of cell growth, development, differentiation, cell cycle and even programmed cell death (apoptosis). YY1 is an essential protein; deletion of YY1 leads to lethality in mouse embryos and disruption of one allele causing developmental defects.

Immunogen:

Recombinant human YY1

Specificity:

The antibody recognizes the Transcription Factor YY1; in WB, the antibody recognizes the O-glycosylated, the phosphorylated, and the post-translationally unmodified protein in cellular and tissue lysates.

Clone ID:

Preservative:

Ampicillin and streptomycin, 0.05% sodium aside.

Format:

Lyophilized purified total IgY in PBS pH7.4

Recommend starting dilution:

If reconstituted with deionized water in 30 µl: WB 1:3000 – 1:8000; IF 1:500 - 1:1000 (in tissue paraffin sections). Optimal dilution has to be determined by the user.

Limitations:

Research Use Only

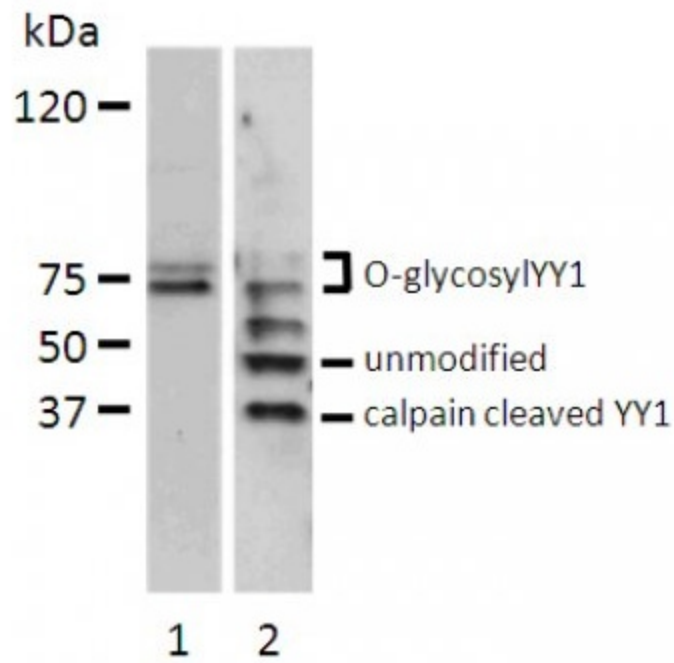
References:

1.-Lange M - Arterial territory-specific phosphorylated retinoblastoma protein species and CDK2 promote differences in the vascular smooth muscle cell response ...

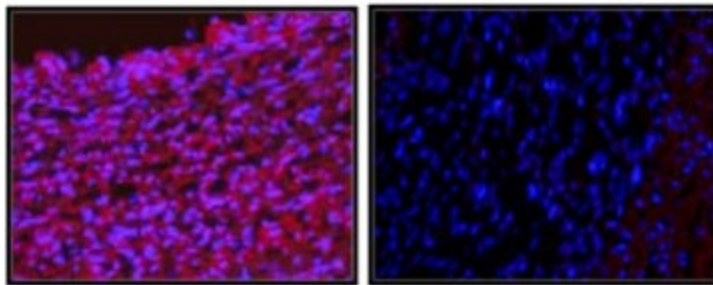
Storage:

Lyophilized antibodies can be kept at 4°C for up to 3 months and should be kept at -20°C for long-term storage (2 years). To avoid freeze-thaw cycles, reconstituted antibodies should be aliquoted before freezing for long-term (1 year) storage (-80°C) or kept at 4°C for short-term usage (2 months). For maximum recovery of product, centrifuge the original vial prior to removing the cap. Further dilutions can be made with the assay buffer. After the maximum long-term storage period (2 years lyophilized or 1 year reconstituted) antibodies should be tested in your assay with a standard sample to verify if you have noticed any decrease in their efficacy.

Image:



Western blot analysis of total cell lysate (200 µg) from serum stimulated bovine endothelial cells (lane 1) and HeLa cells (lane 2) probed with chicken anti-human YY1 antibody. Lane 2 shows that the antibody detects O-glycosylated, unmodified and calpain cleavage product.



Immunofluorescence staining of pig iliac artery cryo sections. YY1 fluorescent immunostaining is shown in red. The nuclear DAPI counter-stain is shown in blue. Control staining with pre-immune chicken IgY is shown on the right. Magnification: 20 x.

